



## **PERRY RIVER DAM EMERGENCY ACTION PLAN**

Dam ID - 416

Approved by the delegate of the Chief Executive,  
Department of Local Government, Water and  
Volunteers Until 1 August 2026.

## QUICK REFERENCE GUIDE

Activation Level				
Hazard	Alert	Lean Forward	Stand Up	Stand Down
Embankment Instability or Distress	<ul style="list-style-type: none"> <li>Excessive Seepage</li> <li>Cracks or scarps near crest</li> <li>Bulging near downstream banks of river</li> <li>Significant erosion</li> <li>Minor earthquake tremor within immediate region</li> <li>Threat made in relation to sabotage</li> </ul>	<ul style="list-style-type: none"> <li>Signs of distress becoming more enhanced to the point where safety of the dam <b>could</b> be damaged</li> <li>Moderate earthquake tremor within immediate region</li> <li>Threat made in relation to sabotage</li> </ul>	<ul style="list-style-type: none"> <li>Signs of distress becoming more enhanced to the point where safety of the dam <b>is</b> impaired</li> <li>Significant earthquake tremor within immediate region</li> <li>Sabotage incident occurs</li> </ul>	<ul style="list-style-type: none"> <li>Imminent threat to dam safety has subsided.</li> </ul>
Flood Event / Overtopping	<ul style="list-style-type: none"> <li>A large rainfall event is forecasted, with total rainfall predicted to exceed 262mm (1 in 100 yr. ARI 24-hour rainfall event),</li> </ul> <p style="text-align: center;"><i>Or</i></p> <ul style="list-style-type: none"> <li>Flow depth over weir exceeding 1.5m (RL 99.5m) and rising.</li> </ul>	<ul style="list-style-type: none"> <li>Flow depth over weir crest exceeding 2.0m (RL 100.0m) and rising.</li> </ul>	<ul style="list-style-type: none"> <li>Flow depth over weir crest in excess of 3.0m (RL 101.0m).</li> </ul>	<ul style="list-style-type: none"> <li>Flow depth over weir crest has receded to 0.2m (RL 98.2m) and is falling,</li> </ul> <p style="text-align: center;"><i>Or</i></p> <ul style="list-style-type: none"> <li>Dam Engineer advises it is safe to commence stand down.</li> </ul>

# Perry River Dam Emergency Action Plan



**Evolution**  
MINING

Mt Rawdon

Version	Date	Description	Prepared By	Approved By	Position	Signature
2.2	11.11.19	Rev D	ATC Williams Pty Ltd	████████	SSE	
2.3	15.11.19	Final	ATC Williams Pty Ltd	████████	SSE	
2.4	May 2020	Reviewed	████████	████████	SSE	
2.5	April 2021	Reviewed	████████	████████	SSE	
2.6	Sept 2021	Reviewed	████████	████████	SSE	
2.7	Sept 2022	Reviewed	████████	████████	SSE	
3.0	Sept 2023	Reviewed	████████	████████	SSE	
4.0	June 2024	Reviewed	████████	████████	SSE	Electronic
4.1	Aug 2024	Reviewed	████████	████████	SSE	Electronic
5.0	Sept 2025	Reviewed	████████	████████	SSE	Electronic
5.1	Sept 2025	updated	████████	████████	SSE	Electronic
5.2	Jan 2026	updated	████████	████████	SSE	Electronic

Distributed to	Date	Reviewed \ Approved Date	Version comments
NBRC – ██████████	10.09.2021	30.09.2021	Version 2.6
BRC – ██████████	17.09.2021	22.09.2021	Version 2.6
QFES – ██████████	17.09.2021	20.09.2021	Version 2.6
DDMG – ██████████	21.09.2021	22.09.2021	Version 2.6
Dam Safety Regulator via Portal.	30.09.2022		Version 2.7
Dam Safety Regulator via email	29.09.2023	Electronic	Version 3.0
NBRC – ██████████	17.07.2024	06.08.2024	Version 4.0
BRC – ██████████	10.08.2024		Version 4.1 - Contacts updated
Dam Safety Regulator via email	10.08.2024		Version 4.1 - Contacts updated
NBRC LDMG – ██████████	09.09.2024 & 12.09.2025 & 14.01.2026		Versions 5.0 & 5.1 - Contacts & Messaging updated
BRC – LDMG – ██████████	09.09.2024 & 12.09.2025 & 14.01.2026		Versions 5.0 & 5.1 - Contacts updated; Version 5.2 Messaging updated
Bundaberg DDC -- ██████████	09.09.2024 & 12.09.2025 & 14.01.2026		Versions 5.0 & 5.1 - Contacts updated; Version 5.2 Messaging updated
Dam Safety Regulator via Portal.	24.09.2025		Versions 5.1 - Contacts updated
Dam Safety Regulator via email	14.01.2026		Version 5.2 - Messaging updated



## TABLE OF CONTENTS

1	INTRODUCTION.....	6
1.1	Background .....	6
1.2	Regulatory Context .....	6
1.3	Purpose and Scope.....	6
1.4	Associated Documents .....	6
2	DETAILS OF PERRY RIVER DAM .....	7
2.1	Dam Location .....	7
2.2	Evacuation Maps - Population at Risk (PAR) .....	9
3	ROLES AND RESPONSIBILITIES .....	10
3.1	Distribution of EAP .....	10
3.2	Organisation Roles & Responsibilities .....	10
4	TRAINING .....	11
5	NOTIFICATION FRAMEWORK .....	13
5.1	EAP Activation Levels .....	13
5.2	Incident Management Team (IMT) .....	13
5.3	Notification Procedure.....	13
6	EMERGENCY EVENTS AND ACTION LIST .....	14
6.1	Incident Identification .....	14
6.2	EAP Activation.....	14
6.3	Response Mechanisms .....	19
6.4	Incident Reporting.....	19
7	INSPECTION AND SURVEILLANCE RECOMMENDATIONS .....	20
7.1	Inspections .....	20
7.2	Special Inspections .....	20
8	ABBREVIATIONS AND KEY DEFINITIONS.....	20
8.1	Abbreviations.....	20
8.2	Definitions .....	22
9	APPENDICES .....	25
	Appendix A: Emergency Notification - Contact List.....	25
	Appendix B: Emergency Alert request process.....	30



## TABLES

Table 1 Perry River Dam Specifications.....	8
Table 2 Organisation Responsibilities.....	10
Table 3 Potential Failure Conditions.....	14
Table 4 EAP Activation Table - Embankment Instability or Distress .....	15
Table 5 EAP Activation Table – Flood Event / Overtopping .....	17
Table 6 Abbreviations .....	20
Table 7 Key Definitions .....	22



## 1 INTRODUCTION

### 1.1 Background

Evolution Mining Limited (Evolution) is the owner/operator of the Mt Rawdon Mine Operation (MRO), acquiring the project as part of the purchase of MRO from Newcrest Mining Ltd in November 2011. The project site is located some 14km southeast of the township of Mount Perry in South East Queensland. As part of the project infrastructure the Perry River Dam exists to supply make-up water for the operation, of which MRO is the registered owner and operator of the storage. This raw water storage is an on-stream facility located some 5km to the northeast of MRO.

### 1.2 Regulatory Context

Under the *Water Supply (Safety and Reliability) Act 2008* the owner/operator of a referable dam must have an approved Emergency Action Plan for the dam.

### 1.3 Purpose and Scope

This Emergency Action Plan details the roles, responsibilities and actions to be undertaken in relation to the Perry River Dam under circumstances identified as an emergency condition. The Perry River Dam is controlled/managed by Evolution as owner/operators of the Mt Rawdon Mine Operations.

The area downstream of the dam, bounding the Perry River, has been identified as being potentially impacted by failure to contain scenarios, and is identified as the area with a Population at Risk (PAR). Potentially impacted downstream residents will be notified by site staff in the event of a prescribed incident.

This EAP details emergency events and action procedures for:

- Flooding;
- Excessive Seepage;
- Embankment Instability / Movement / Earthquake; and
- Sabotage / Vandalism.

Emergency event identification, assessment of level of risk and emergency action procedures are provided in tabulated format to outline the actions/responses to be undertaken by site staff responsible for the control and evacuation of the inundation area.

### 1.4 Associated Documents

This Emergency Action Plan should be read in conjunction with the following documents;

- AWA, (2013), *Mt Rawdon Gold Mine - Perry River Dam - Acceptable Flood Capacity Assessment 2013* (Ref: 0400-RAW-001-r001-d), May 2013, Allan Watson Associates Pty Ltd.
- ATCW (2022), *Mt Rawdon Operations – Failure Impact Assessment – Perry River Dam*, (ref: 111359.88.R01.Rev 0 July 2022).



- ATCW (2023), Mt Rawdon Operations – 2023 Perry River Dam Comprehensive Inspection, (ref: 111359.95R001.Rev5 September 2023).
- ATCW (2024) Memorandum: Perry River Dam EAP Advice, (ref: 111359-99M008-Rev0 July 2024). – The 2022 FIA remains current.<sup>1</sup>

## 2 DETAILS OF PERRY RIVER DAM

### 2.1 Dam Location

The Perry River Dam is an on-stream dam located some 5km to the northeast of MRO site. The dam is a roller compacted concrete (RCC) embankment dam (see Figure 1) and is used primarily for raw water storage for MRO. The weir was designed to overtop during extreme rainfall events up to the 1 in 10,000-year ARI event<sup>2</sup> with a flow of 1,347m<sup>3</sup>/s. A scour pipe and valve is located within the embankment on the eastern side of the RCC embankment. The system comprises an inlet cage, and a concrete lined steel pipe with a butterfly valve located on the downstream embankment face, which can only be accessed safely when the weir is not overflowing.

Water is recovered from the weir via a floating off-take located adjacent to the decant tower which is situated on the eastern side, some 100m upstream from the RCC embankment. The pump and pipe delivery system comprises a four-inch centrifugal pump with electric motor with an above ground 300mm HDPE pipeline, which discharges at the Mt Rawdon Plant Site.

The Perry River Dam water level is monitored with an automatic river gauge (Station No. 539147), of which real-time data and previous historical levels can be accessed via the Bureau of Meteorology (BoM) website, by the following link:

<http://www.bom.gov.au/fwo/IDQ65391/IDQ65391.539147.plt.shtml>

Mt Rawdon Operations also has an automatic river gauge which can determine upstream (Perry River Dam Wall) flow rate and height above spillway. Requires login here: [xylem.eagle.io](http://xylem.eagle.io) - [Login](#).

<sup>1</sup> The FIA remains current in 2025, pers com Ralph Holding (EOR) - 4 Sept 2025.

# Perry River Dam Emergency Action Plan



**Evolution**  
MINING

Mt Rawdon



**Figure 1: Perry River Dam**

The specific details regarding the Perry River Dam are listed in **Table 1**, below.

**Table 1**  
**Perry River Dam Specifications**

Description	Value
Referable Dam Register No.	0416
Latitude	-25.25°
Longitude	151.80°
Physical Address	Swindon Road, Mount Perry
Property Description	3/BN37400 & 1/BON222
Construction Type	Roller Compacted Concrete (RCC)
Local Authority	North Burnett Regional Council, and Bundaberg Regional Council
Maximum Height of Dam	12m
Dam Crest Length	104m
Dam Crest Width	4.3
Upstream Batter Slopes	600mm steps, with overall slope 0.6H: 1V
Downstream Batter Slopes	0.8H: 1V
Catchment Area	9,800ha
Total Storage Capacity	1,050 ML
Embankment Crest Level (spill elevation)	RL 98.0m
Reservoir Full Supply Level	RL 98.0m
Consequence Category	Significant - category 1
Dam commissioned	1996
Stream/River	Perry River

# Perry River Dam Emergency Action Plan



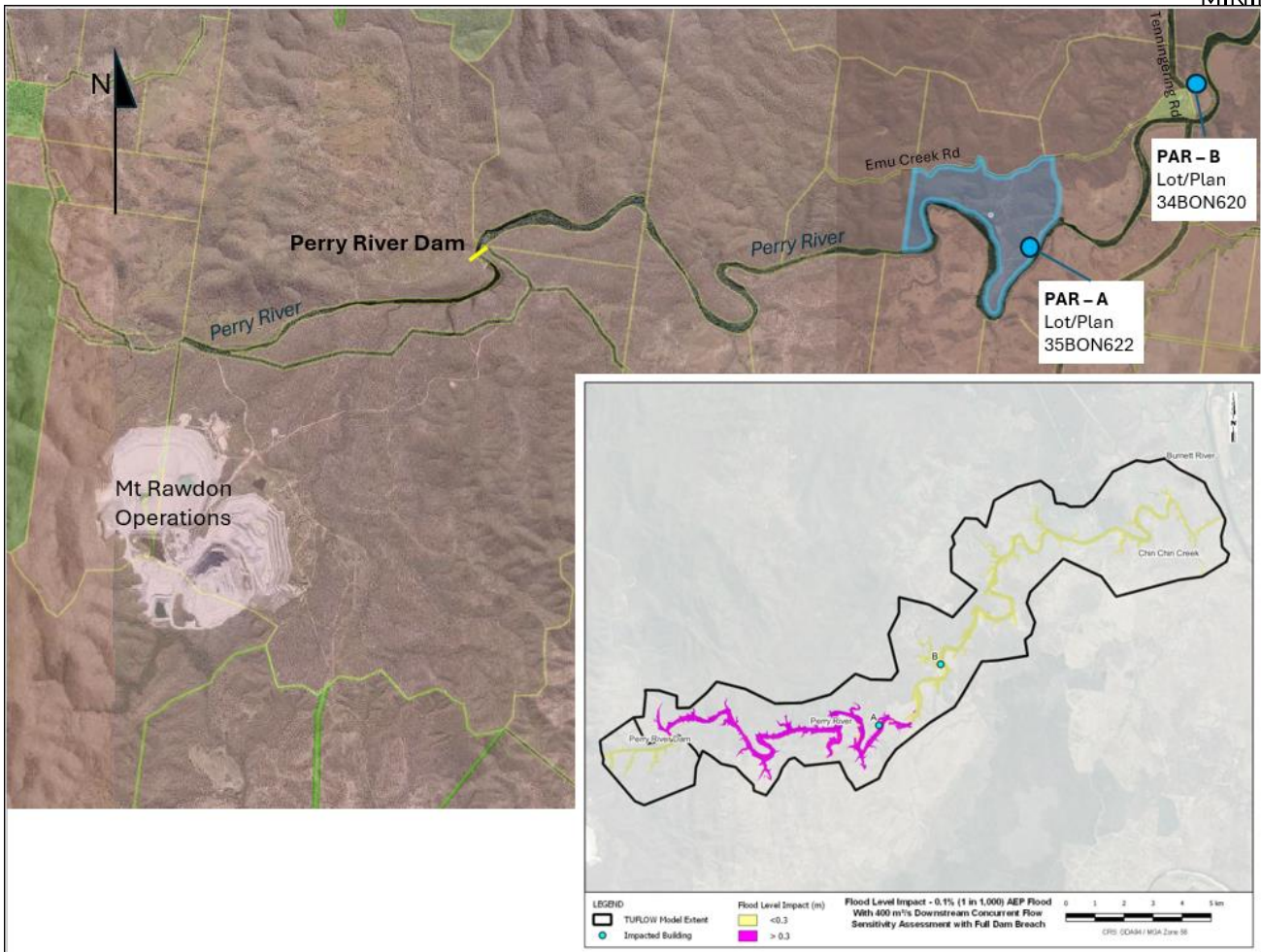
**Evolution**  
MINING

Mt Rawdon

Description	Value
AMTD	34.9km
Sunny Day failure (Population At Risk)	PAR 0
Flood failure (Population At Risk)	PAR 5.6 (2 residences)
Nearest PAR	12.9 kms downstream
Downstream Public Road Crossings impacted by flooding	<ul style="list-style-type: none"> <li>• Tenningering Road Crossing</li> <li>• Agnes Road Crossing</li> <li>• Mingo Road/Walla Road Crossing</li> <li>• Eddingtons Road Crossing</li> </ul>
River gauging station ID	Station No. 539147  ( <a href="http://www.bom.gov.au/fwo/IDQ65391/IDQ65391.539147.plt.shtml">http://www.bom.gov.au/fwo/IDQ65391/IDQ65391.539147.plt.shtml</a> ) Or <a href="http://xylem.eagle.io">xylem.eagle.io</a> - Login

## 2.2 Evacuation Maps – Population at Risk (PAR)

The locations of two downstream Population at Risk (PAR) residences which should be evacuated in the event of a flooding failure of the Perry River Dam are shown in Figure 2.



**Figure 2: PAR Evacuation Map (with inset showing potential flood impacts and extents).**

Source : Perry River Dam Failure Impact Assessment (2022), Figure 006.



## 3 ROLES AND RESPONSIBILITIES

### 3.1 Distribution of EAP

The Perry River Dam is owned and operated by Evolution and as such the Site Manager of Evolution is ultimately responsible for the revision and distribution of this EAP.

### 3.2 Organisation Roles & Responsibilities

The following table shows the relevant entities with dam safety incident responsibilities.

**Table 2**  
**Organisation Responsibilities**

Agency	Responsibilities
Evolution Mining	<p><b>General:</b></p> <ul style="list-style-type: none"> <li>- Prepare, implement and maintain an Emergency Action Plan for the Perry River Dam in accordance with the requirements of the <i>Water Supply (Safety and Reliability) Act 2008</i>.</li> <li>- Preparedness, including staff training, emergency planning and undertaking of simulated incident exercises.</li> <li>- Maintaining an ongoing Incident and Emergency Roster in accordance with the Emergency Response Plan.</li> <li>- Monitoring the dam during normal operations, major climatic events or other emergency situations.</li> <li>- Initial triggering of each activation level of the Emergency Action Plan</li> <li>- Undertaking required actions and notifications for each activation level of the EAP, including evacuation of site personnel and downstream PAR as appropriate.</li> <li>- Initiating, managing and terminating emergency situations.</li> </ul> <p><b>Site Manager:</b></p> <ul style="list-style-type: none"> <li>- Custodian of the EAP and responsible for the development, implementation of the EAP,</li> <li>- Monitoring the dam monthly during normal operations and as required during emergency situations,</li> <li>- Initiating, managing and terminating emergency situations,</li> <li>- Undertaking required actions and notifications for each activation level of the EAP</li> </ul>
Local Disaster Management Groups North Burnett Regional Council & Bundaberg Regional Council	<ul style="list-style-type: none"> <li>- Organize all appropriate resources to contribute to response and emergency recovery measures during the dam safety event.</li> <li>- Utilize assistance from other relevant groups and agencies in response to the dam safety event.</li> <li>- Close roads as appropriate.</li> </ul>
District Disaster Management Group (Bundaberg)	<ul style="list-style-type: none"> <li>- Provide support to Local Disaster Management Group in the event that additional response and/or recovery is required.</li> </ul>
Dam Safety Regulator (Department of Regional Development, Manufacturing and Water)	<ul style="list-style-type: none"> <li>- Provide regulatory input during a dam safety emergency in accordance with the requirements of the <i>Water Supply (Safety and Reliability) Act 2008</i>.</li> </ul>



Agency	Responsibilities
Dam Engineer (RPEQ)	<ul style="list-style-type: none"> <li>- Dam engineering support, including special inspections, emergency works supervision and recommendation of remedial works.</li> </ul>

## 4 TRAINING

Evolution Mining is committed to ensuring that relevant staff are appropriately trained in this EAP. All Mt Rawdon Operation employees fall under the Mine Training Scheme which outlines the training processes in place for the operation. This includes for mine workers with responsibilities for the management and monitoring of the Perry River Dam as well as acting on and responding to events outlined in this EAP.

The Mt Rawdon Operation has a Fitness for Work and Fatigue Management Plan in place which ensures the risk associated with fatigue do not occur and that there are adequate available staff to manage a prolonged event through to stand down.

Staff involved and responsible for the dam inspections and surveillance shall undertake a recognised dam operator’s course and demonstrate appropriate knowledge and skills to ensure that the ongoing monitoring and surveillance of the dam is to an appropriate level to fulfil this EAP requirements.

Training on this EAP should be carried out annually to ensure all dam personnel are familiar with the EAP activation triggers and roles and responsibilities. Mt Rawdon has in place an Emergency Management Plan which outlines how emergencies are to be responded to and the associated training required. This EAP will form part of that training plan for emergency response. In summary, the following training schedule should be targeted:

# Perry River Dam Emergency Action Plan



**Evolution**  
MINING

Mt Rawdon

<b>Training</b>	<b>Who should attend</b>	<b>Timing</b>
Review of EAP activation triggers, roles, and responsibilities	Relevant managers, superintendents	Annually - prior to wet season 1 November
Full stakeholder EAP scenario training exercise	EVN relevant managers, superintendents Local Disaster Management Group (LDMG) District Disaster Management Group (DDMG) Dam regulator (optional)	Every 3 years
Emergency Response Team training	Emergency Response Team (ERT) members	Annually - as part of ERT training plan
Technical / professional training	Geotechnical engineers Environmental advisors Managers Superintendents	Adhoc - as part of role and development plan, and management structure



## 5 NOTIFICATION FRAMEWORK

### 5.1 EAP Activation Levels

Timely activation of the EAP is a crucial element in the effectiveness of the plan, with appropriate warning systems imperative to reduce the risk of loss of life and property damage downstream from the dam.

The EAP is to be activated via an escalation model based on the following levels of EAP activation:

<b>NORMAL</b>	Normal operations.
<b>ALERT</b>	A heightened degree of vigilance.
<b>LEAN FORWARD</b>	Increased operational readiness, monitoring and reporting vigilance.
<b>STAND UP</b>	Full implementation of the EAP, including evacuation, reporting and intervention (if safe to do so).
<b>STAND DOWN</b>	Transition from responding to an event and back to normal (or recovery) operations, once the threat has sufficiently diminished.

### 5.2 Incident Management Team (IMT)

At any point in the escalation of activation levels an Incident Management Team may be formed onsite as deemed by the SSE (site manager) or their delegate as outlined in the Incident Management Team Procedure (MRO\_OHS\_PRO\_0020). Emergencies often have other implications which need to be managed including business interruption, insurance implications, legal liability, government injunction, family and community management and media coverage. If an emergency meets a predetermined emergency trigger as per the Incident Management Team Procedure (MRO\_OHS\_PRO\_0020) the Crisis Management Team (CMT) consisting of the Corporate Leadership Team, will take over the coordination of aspects of the emergency. MRO's IMT will work closely and unconditionally with the CMT.

### 5.3 Notification Procedure

The emergency contact list, shown in **Appendix A**, details the notifications required as a consequence of the escalating EAP activation levels. The emergency contacts are categorised according to relevant organisations/groups and are listed in order of priority. The primary phone numbers provided are the first point of contact to be attempted by Evolution Manager on Call or delegate. Evolution Manager on Call (or delegate) must request acknowledgment from emergency contacts, to ensure messages have been received. If impacted downstream residents can not be reached by the primary or secondary methods of contact, the Manager on Call or delegate must inform the LDMG of this fact. Where residences are not reachable due to flooded roads helicopter access may be required. Evacuated residents without mobile telephones would be able to receive further instruction on the evacuation orders through the local Police Service.



## 6 EMERGENCY EVENTS AND ACTION LIST

### 6.1 Incident Identification

**Table 3** lists potential conditions that are considered most likely to initiate a failure of Perry River Dam.

**Table 3**  
**Potential Failure Conditions**

Potential condition	Indicator(s)
Embankment Instability	Defects observed on or near to embankment (cracking, deformation or settlement). Significant erosion of the embankment that threatens integrity of the embankment.
Embankment Sabotage	Intentional attack/damage of the embankment in attempt to fail the embankment and initiate uncontrolled release.
Flooding	An extreme rainfall event is forecast, predicted to cause a significant flooding event downstream.
Excessive Seepage	Increased levels of seepage observed, or a new area of seepage located.

This list of indicators forms the basis for routine operational inspections and checks of the dam to be completed. To simplify the action levels, the potential conditions or hazards have been grouped as 1. Embankment Instability/distress, and 2. Flooding event/overtopping. **Please note that for a Sunny Day Failure there is no Person At Risk (PAR) (PAR = 0).**

### 6.2 EAP Activation

For each of the potential conditions listed in **Table 3**, above, EAP activation levels and corresponding actions are provided in **Tables 4** and **5**.

The intent of these EAP activation level tables is that they outline the steps to identify, evaluate, classify the urgency, and manage some, not necessarily all, of the events that can lead to failure of the dam.

**Table 4**  
**EAP Activation Table - Embankment Instability or Distress**

Activation level	General characteristics	Actions	Required notifications	
			Who to contact	Message text / talking points
NORMAL	An ALERT or higher activation level has not been triggered.	<ul style="list-style-type: none"> <li>Daily monitoring and inspections.</li> </ul>	Nil	
ALERT	<p>Identification of signs of embankment distress such as:</p> <ul style="list-style-type: none"> <li>Cracks or scarps near the crest, bulging near downstream banks of river</li> <li>Significant erosion of the riverbanks upstream or downstream</li> <li>Minor earthquake tremor (e.g. felt vibrations, windows frames rattle) within the immediate region.</li> <li>Significant erosion</li> <li>Threat made in relation to sabotage</li> </ul>	<ul style="list-style-type: none"> <li>Geotechnical and Environmental monitoring and inspections where safe to do so</li> <li>Consultation with Dam Engineer (RPEQ)</li> <li>Familiarise with Incident Management Team procedure</li> <li>Ensure no persons within the dam break inundation zone</li> <li>Restrict road access to Perry River Dam from mine access roads</li> </ul>	<p><b>Phone Call:</b> Evolution Site Manager (or delegate) to notify:</p> <ul style="list-style-type: none"> <li>Downstream property owners</li> <li>Bundaberg DDMG</li> <li>North Burnett LDMG</li> <li>Bundaberg LDMG</li> <li>Dam regulator</li> <li>Queensland Police Service</li> </ul> <p>(see Appendix A for contact details).</p> <p><i>Record time, date, information provided and received for all notifications.</i></p>	<p><b>Phone Call</b></p> <p><i>“Be Aware”</i></p> <p>Describe current situation with Dam – Event, not a mine dam (no risk of contamination), activation level, characteristics, storage level, actions in play.</p> <p><b>Please note that for a Sunny Day Failure there is no Person At Risk (PAR) (PAR = 0).</b></p>
LEAN FORWARD	<p>Signs of distress becoming more enhanced to the point where safety of the dam <b>could be</b> damaged</p> <p>Moderate earthquake tremor (e.g. distinct tremors, items knocked off shelves desks, slight building damage) within the immediate region.</p> <p>Or</p> <p>Threat made in relation to sabotage</p>	<ul style="list-style-type: none"> <li>Geotechnical and Environmental monitoring and inspections where safe to do so</li> <li>Consultation with Dam Engineer (RPEQ)</li> <li>Formulate Incident Management Team</li> <li>Ensure no persons within the dam break inundation zone</li> </ul> <p>Restrict road access to Perry River Dam from mine access roads</p>	<p><b>Phone Call:</b> Evolution Site Manager (or delegate) to notify:</p> <ul style="list-style-type: none"> <li>Downstream property owners</li> <li>Bundaberg DDMG</li> <li>North Burnett LDMG</li> <li>Bundaberg LDMG</li> <li>Dam regulator</li> <li>Queensland Police Service</li> </ul> <p>(see Appendix A for contact details).</p> <p><i>Record time, date, information provided and received for all notifications.</i></p>	<p><b>Phone Call</b></p> <p><i>“Prepare to Leave”</i></p> <p>Describe current situation with Dam – Event, not a mine dam (no risk of contamination), activation level, characteristics, storage level, actions in play.</p>
STAND UP (Full implementation of EAP - Declared Incident)	<p>Signs of distress becoming more enhanced to the point where safety of the dam <b>is</b> impaired.</p> <p>Significant earthquake (e.g. strong shaking, extensive infrastructure damage) within the immediate region).</p> <p>Or</p> <p>Sabotage incident occurs</p>	<ul style="list-style-type: none"> <li>Geotechnical and Environmental monitoring and inspections where safe to do so</li> <li>Consultation with Dam Engineer (RPEQ)</li> <li>Follow Incident Management Team protocol</li> <li>Ensure no persons within the dam break inundation zone</li> </ul> <p>Restrict road access to Perry River Dam from mine access roads</p>	<p><b>Phone Call:</b> Evolution Site Manager (or delegate) to notify:</p> <ul style="list-style-type: none"> <li>Downstream property owners</li> <li>Bundaberg DDMG</li> <li>North Burnett LDMG</li> <li>Bundaberg LDMG</li> <li>Dam regulator</li> <li>Queensland Police Service</li> </ul> <p>(see Appendix A for contact details).</p> <p><i>Record time, date, information provided and received for all notifications.</i></p>	<p><b>Phone Call</b></p> <p><i>“Leave Immediately”</i></p> <p>Describe current situation with Dam – Event, not a mine dam (no risk of contamination), activation level, characteristics, storage level, actions in play.</p>

<b>STAND DOWN</b>	<p>Imminent threat to dam safety has subsided.</p> <p>Dam Engineer (RPEQ), EVOLUTION, Dam Regulator &amp; Queensland Police Service concur.</p>	<ul style="list-style-type: none"> <li>Determine if road access to Perry River Dam from mine access roads should be unrestricted</li> <li>Undertake special inspections as necessary</li> <li>Submit EER</li> <li>Determine remedial works as necessary and in line with guidelines and legislation</li> <li>Return to ALERT or NORMAL activation level as appropriate.</li> </ul>	<p><b>Phone Call:</b> Evolution Site Manager (or delegate) to notify:</p> <ul style="list-style-type: none"> <li>Downstream property owners</li> <li>Bundaberg DDMG</li> <li>North Burnett LDMG</li> <li>Bundaberg LDMG</li> <li>Dam regulator</li> <li>Queensland Police Service</li> </ul> <p>(see Appendix A for contact details).</p> <p><i>Record time, date, information provided and received for all notifications.</i></p>	<p><b>Phone Call</b></p> <p><i>“Incident over”</i></p> <p>Describe current situation with Dam – Event, not a mine dam (no risk of contamination), activation level, characteristics, storage level, actions in play.</p>
-------------------	-------------------------------------------------------------------------------------------------------------------------------------------------	------------------------------------------------------------------------------------------------------------------------------------------------------------------------------------------------------------------------------------------------------------------------------------------------------------------------------------------------------------------------------------	-------------------------------------------------------------------------------------------------------------------------------------------------------------------------------------------------------------------------------------------------------------------------------------------------------------------------------------------------------------------------------------------------------------------------------------	--------------------------------------------------------------------------------------------------------------------------------------------------------------------------------------------------------------------------

**Table 5**  
**EAP Activation Table – Flood Event / Overtopping**

Activation level	General characteristics	Actions	Required notifications	
			Who to contact	Message text / talking points
NORMAL	An ALERT or higher activation level has not been triggered.	<ul style="list-style-type: none"> <li>Continue monitoring of predicted rainfall events utilising online BOM websites, news, and radio.</li> </ul>	Nil	
ALERT	<p>A large rainfall event is forecasted, with total rainfall predicted to exceed 262mm (1 in 100 yr. ARI 24-hour rainfall event),</p> <p>Or</p> <p>Flow depth over weir exceeding 1.5m (RL 99.5m) and rising*</p> <p>* determined by "Mt Rawdon Alert" flow gauging station # 539147</p> <p>Or</p> <p><a href="http://xylem.eagle.io">xylem.eagle.io</a> - Login</p>	<ul style="list-style-type: none"> <li>Geotechnical and Environmental monitoring and inspections where safe to do so</li> <li>Continue monitoring of predicted rainfall events utilising online BOM websites, news, and radio.</li> <li>Determine if mine site storage dams likely to overtop and comply with Environmental Authority (EA) conditions</li> <li>Consultation with Dam Engineer (RPEQ)</li> <li>Familiarise with Incident Management Team procedure</li> <li>Ensure no personnel within the dam break inundation zone or high-risk flood areas e.g. road crossings, rivers/creeks.</li> <li>Restrict road access to the mine and Perry River Dam as appropriate</li> </ul>	<p><b>Phone Call:</b> Evolution Site Manager (or delegate) to notify:</p> <ul style="list-style-type: none"> <li>Downstream property owners</li> <li>Bundaberg DDMG</li> <li>North Burnett LDMG</li> <li>Bundaberg LDMG</li> <li>Dam regulator</li> <li>Queensland Police Service</li> </ul> <p>(see Appendix A for contact details).</p> <p><i>Record time, date, information provided and received for all notifications.</i></p> <p><b>MESSAGE (SMS &amp; VOICE):</b> 1-Alert</p> <p>(See Appendix B for instructions on how to issue an emergency alert request).</p>	<p><b>Phone Call</b> Describe current situation with Dam – Event, not a mine dam (no risk of contamination), activation level, characteristics, storage level, actions in play.</p> <p><b>SMS</b> This is a Dam Spillage Advice message from Evolution Mining. Perry River Dam is spilling excess water from <b>01:01am on 01 September 2025</b>. Stay informed and monitor conditions. Warn neighbours, secure belongings and finalise evacuation plans. Listen to ABC Wide Bay radio 100.1 FM or 8.55 AM. More information available at <a href="http://www.emergency.northburnett.qld.gov.au">www.emergency.northburnett.qld.gov.au</a> or call 1300 696 272.</p> <p><b>Voice</b> This is a Dam Spillage Advice message from Evolution Mining. Perry River Dam is spilling excess water from <b>01 01 A M on 01 September 2025</b>. Stay informed and monitor conditions. Warn neighbours, secure belongings and finalise evacuation plans. Listen to A B C Wide Bay radio 100 point 1 FM or 8 55 A M. More information available at <a href="http://www.emergency.northburnett.qld.gov.au">www.emergency.northburnett.qld.gov.au</a> or call 1300 696 272.</p>
LEAN FORWARD	<p>Flow depth over weir crest exceeding 2.0m (RL 100.0m) and rising*</p> <p>* determined by "Mt Rawdon Alert" flow gauging station # 539147</p> <p>Or</p> <p><a href="http://xylem.eagle.io">xylem.eagle.io</a> - Login</p>	<ul style="list-style-type: none"> <li>Geotechnical and Environmental monitoring and inspections where safe to do so</li> <li>Continue monitoring of predicted rainfall events utilising online BOM websites, news, and radio.</li> <li>Determine if mine site storage dams likely to overtop and comply with Environmental Authority (EA) conditions</li> <li>Consultation with Dam Engineer (RPEQ)</li> <li>Formulate Incident Management Team</li> <li>Ensure no personnel within the dam break inundation zone or high-risk flood areas e.g. road crossings, rivers/creeks.</li> <li>Restrict road access to the mine and Perry River Dam as appropriate</li> </ul>	<p><b>NOTIFY (Phone Call):</b> Evolution Site Manager (or delegate) to notify downstream property owners, Bundaberg DDMG, North Burnett LDMG, Bundaberg LDMG, Dam regulator, Queensland Police Service of LEAN FORWARD (Watch and Act) activation level.</p> <p>(see Attachment A).</p> <p><i>Record time, date, information provided and received for all notifications.</i></p> <p><b>MESSAGE (SMS &amp; VOICE):</b> 2-LEAN FORWARD</p>	<p><b>Phone Call</b> Describe current situation with Dam – Event, not a mine dam (no risk of contamination), activation level, characteristics, storage level, actions in play.</p> <p><b>SMS</b> This is a Dam Damage Watch and Act message from Evolution Mining. There is heavy rain causing <b>moderate</b> flooding along the Perry River from <b>01:01am on 01 September 2025</b>. Perry River Dam may fail. Warn neighbours. Avoid flooded areas and prepare to move to higher ground. Prepare to leave now. Listen to ABC Wide Bay radio 100.1 FM or 8.55 AM. More information available at <a href="http://www.emergency.northburnett.qld.gov.au">www.emergency.northburnett.qld.gov.au</a> or call 1300 696 272. For life threatening emergencies call 000.</p> <p><b>Voice</b> This is a Dam Damage Watch and Act message from Evolution Mining. There is heavy rain causing <b>moderate</b> flooding along the Perry River from <b>01 01 A M on 01 September 2025</b>. Perry River Dam may fail. Warn neighbours. Avoid flooded areas and prepare to move to higher ground. Prepare to leave now. Listen to ABC Wide Bay radio 100 point 1 FM or 8 55 AM. More</p>



<b>STAND UP</b> (Full implementation of EAP - Declared Incident)	Flow depth over weir crest in excess of 3.0m (RL 101.0m) *  *determined by "Mt Rawdon Alert" flow gauging station # 539147  Or  <a href="http://xylem.eagle.io">xylem.eagle.io</a> - Login	<ul style="list-style-type: none"> <li>• Geotechnical and Environmental monitoring and inspections where safe to do so</li> <li>• Continue monitoring of predicted rainfall events utilising online BOM websites, news, and radio.</li> <li>• Determine if mine site storage dams likely to overtop and comply with Environmental Authority (EA) conditions</li> <li>• Consultation with Dam Engineer (RPEQ)</li> <li>• Follow Incident Management Team procedure</li> <li>• Ensure no personnel within the dam break inundation zone or high-risk flood areas e.g. road crossings, rivers/creeks.</li> <li>• Restrict road access to the mine and Perry River Dam as appropriate</li> </ul>	<p><b>NOTIFY (Phone Call):</b> Evolution Site Manager (or delegate) to notify downstream property owners, Bundaberg DDMG, North Burnett LDMG, Bundaberg LDMG, Dam regulator, Queensland Police Service of STAND UP (Emergency) activation level.</p> <p>(see Attachment A).</p> <p><i>Record time, date, information provided and received for all notifications.</i></p> <p><b>MESSAGE (SMS &amp; VOICE):</b> 3-STAND UP</p>	<p>information available at <a href="http://www.emergency.northburnett.qld.gov.au">www.emergency.northburnett.qld.gov.au</a> or call 1300 696 272. For life threatening emergencies call triple zero.</p> <p><b>Phone Call</b> Describe current situation with Dam – Event, not a mine dam (no risk of contamination), activation level, characteristics, storage level, actions in play.</p> <p><b>SMS</b> Emergency Emergency. This is a Dam Failure Emergency Warning from Evolution Mining. Perry River Dam is likely to fail OR has failed at approximately <b>01:01am on 01 September 2025</b>. Flooding may be faster and higher than previous floods. Leave immediately if it is safe to do so. If it is too dangerous to leave, move to higher ground and take shelter now. Listen to ABC Wide Bay radio 100.1 FM or 855 AM. More information available at <a href="http://www.emergency.northburnett.qld.gov.au">www.emergency.northburnett.qld.gov.au</a> or call 1300 696 272. For life threatening emergencies call 000.</p> <p><b>Voice</b> Emergency Emergency. This is a Dam Failure Emergency Warning from Evolution Mining. Perry River Dam is likely to fail OR has failed at approximately <b>01 01 A M on 01 September 2025</b>. Flooding may be faster and higher than previous floods. Leave immediately if it is safe to do so. If it is too dangerous to leave move to higher ground and take shelter now. Listen to ABC Wide Bay radio 100 point 1 FM or 8 55 AM. More information available at <a href="http://www.emergency.northburnett.qld.gov.au">www.emergency.northburnett.qld.gov.au</a> or call 1300 696 272. For life threatening emergencies call triple zero.</p>
<b>STAND DOWN</b>	Flow depth over weir crest has receded to 0.2m (RL 98.2m) and is falling,  Imminent threat to dam safety has subsided.  Dam Engineer (RPEQ), EVOLUTION, Dam Regulator & Queensland Police Service concur.	<ul style="list-style-type: none"> <li>• Road access to the mine and Perry River Dam as appropriate</li> <li>• Undertake special inspections as necessary</li> <li>• Submit EER</li> <li>• Determine remedial works as necessary and in line with guidelines and legislation</li> <li>• Return to ALERT or NORMAL activation level as appropriate.</li> </ul>	<p><b>NOTIFY (Phone Call):</b> Evolution Site Manager (or delegate) to notify downstream property owners, North Burnett LDMG, Bundaberg LDMG, Dam regulator, Queensland Police Service of STAND UP (Emergency) activation level.</p> <p>(see Attachment A).</p> <p><i>Record time, date, information provided and received for all notifications.</i></p>	<p><b>Phone Call</b> Describe current situation with Dam – Event, not a mine dam (no risk of contamination), activation level, characteristics, storage level, actions in play.</p>



## 6.3 Response Mechanisms

In developing response mechanisms for this EAP, the utilisation of the 'Emergency Alert' national telephone warning system has been adopted.

The evacuation map is depicted in **Figure 2** and shows 2 impacted properties.

## 6.4 Incident Reporting

All incidents are to be reported in accordance with the incident reporting procedures of Evolution. Incidents and accidents associated with the management of the Perry River Dam shall be reported (via an Emergency Event Report, EER) to the administering authority (dam safety regulator) as required by section s352T of the *Water Supply (Safety and Reliability) Act 2008*. The timing of submission of each EER to Dam Safety Regulator shall be within 30 business days of the end of the event. Details of the EER shall be in accordance with the Emergency Action Plan for Referable Dam Guideline (Department of Regional Development, Manufacturing and Water), including the following:

1. Description of the Event
2. General Comments and/or Recommended changes to the EAP
3. Management of the event
  - Instrument Readings alternately actual rain gauge readings
  - Inspection Sheets or for smaller dams observations from monitoring
  - Relevant Photos of the event
  - Details of communication during the event with key stakeholders i.e. PAR, LDMG, Police, media
  - Analysis of the communication i.e. was the communication effective
  - Reports issued during the Event
  - Internal Situation Reports



## 7 INSPECTION AND SURVEILLANCE RECOMMENDATIONS

### 7.1 Inspections

It is recommended that inspection of the dam be undertaken weekly. More frequent inspections may be required under EAP activation conditions. Input should be sought from the Perry River Dam Engineer regarding the required frequency and level of detail of inspections during such circumstances. It is noted that personnel undertaking inspections should be initially provided with on-site support to maintain consistency in understanding of inspection requirements.

### 7.2 Special Inspections

In an emergency situation, special inspections should be undertaken as needed by a suitably qualified and experienced dam engineer.

## 8 ABBREVIATIONS AND KEY DEFINITIONS

### 8.1 Abbreviations

The following abbreviations are utilised within this EAP.

**Table 6**  
**Abbreviations**

Abbreviation	Definition
The Act	<i>The Water Supply (Safety and Reliability Act 2008</i>
AHD	Australian Height Datum
BoM	Bureau of Meteorology
DCF	Dam Crest Flood
DMG	Disaster Management Group
DLGWV	Department of Local Government, Water and Volunteers
DM	Disaster Management
EA	Emergency Alert
EAP	Dam Owner's Emergency Action Plan
EER	Emergency Event Report
EMAF	Emergency Management Assurance Framework
FSL	Full Supply Level
LDC	Local Disaster Coordinator
LG	Local Government
ML	Mega Litre
PAR	Population at Risk
PMF	Probable Maximum Flood

# Perry River Dam Emergency Action Plan



**Evolution**  
MINING

Mt Rawdon

Abbreviation	Definition
PMP	Probable Maximum Precipitation
QDMA	Queensland Disaster Management Arrangements
QDSMG	Queensland Dam Safety Management Guideline
QFD	Queensland Fire Department
QPS	Queensland Police Service
SDCC	State Disaster Coordination Centre
SES	State Emergency Services



## 8.2 Definitions

The following definitions are key concepts used within this EAP.

**Table 7**  
**Key Definitions**

Concept	Definition
The Act	<i>The Water Supply (Safety and Reliability Act 2008</i>
EAP Activation	Is defined as the actions undertaken by Evolution as per the EAP in response to a dam event if, <ol style="list-style-type: none"> <li>1. Persons or property may be harmed, because of the event; and,</li> <li>2. A coordinated response involving two or more of the following relevant entities is likely to be required to respond to the event;                             <ul style="list-style-type: none"> <li>• Each local government whose local government area may be affected if a dam hazard event or emergency event were to happen for the dam;</li> <li>• The DNRME chief executive (the Regulator)</li> <li>• Another entity the dam owner considers appropriate i.e QPS, QFD.</li> </ul> </li> </ol>
Alert	The first stage of emergency response whereby a heightened level of vigilance is maintained due to the possibility of an emergency event occurring. Action is required to ensure the situation by someone capable of assessing the potential threat to the dam.
Approved Emergency Action Plan	Refers to an emergency action plan that is approved under Section 352I (1) (a) or taken to be an approved emergency action plan under section 352Q (2).
Dam Hazard	Refers to a reasonably foreseeable situation or condition that may; <ol style="list-style-type: none"> <li>(a) Cause or contribute to the failure of the dam, if the failure may cause harm to persons or property; or,</li> <li>(b) Require an automatic or controlled release of water from the dam, if the release of the water may cause harm to persons or property.</li> </ol> (refer 352A of the Act)
Dam Hazard Event	An event arising from a dam hazard if persons or property may be harmed because of the event; and, <ol style="list-style-type: none"> <li>(a) A coordinated response involving 2 or more of the relevant entities; and,</li> <li>(b) The event is not an emergency event.</li> </ol> (refer 352A of the Act)
Disaster Management Group	A district group established under the <i>Disaster Management Act</i> , whose disaster district under the Act could, under the plan be affected by a dam hazard.
Emergency Alert (EA)	The Emergency Alert (EA) system is a national telephone warning system administered in Queensland by the Queensland Fire and Emergency Service. The EA system provides emergency authorities with a rapid mass notification service to deliver preformatted messages via landline and mobile telephones within a defined geographic area.
Emergency Event	An event arising from a dam hazard if persons or property may be harmed because of the event; and any of the following apply; <ol style="list-style-type: none"> <li>(i) A coordinated response involving 2 or more of the relevant entities;</li> <li>(ii) The event may arise because of a disaster situation declared under the <i>Disaster Management Act 2003</i>;</li> <li>(iii) An entity performing functions under the State disaster management plan may, under the plan, require the owner of the dam to give the entity information about the event.</li> </ol> (refer 352A of the Act)

# Perry River Dam Emergency Action Plan



**Evolution**  
MINING

Mt Rawdon

**Table 7**  
**Key Definitions (Cont'd)**

Concept	Definition
Emergency Event Report	A report on the performance of the dam and functioning of the EAP during an emergency event which is presented to the chief executive prior to the end of the event at the request of the chief executive.
Failure Impact Assessment	It is a process under the <i>Water Supply (Safety and Reliability) Act 2008</i> to determine the number of people whose safety could be at risk should the dam fail. This assessment must be certified by a Registered Professional Engineer Queensland (RPEQ) in accordance with the <i>Water Supply (Safety and Reliability) Act 2008</i> .
Hazard	A source of potential harm, or situation with a potential to cause loss.
Lean Forward	The stage of emergency response prior to 'stand up' whereby a heightened level of situational awareness of a disaster event (either current or impending) is maintained and state of readiness is developed. Personnel at dams are on standby; ready to activate the next stage of the EAP.
Local Disaster Management Group (LDMG)	Local disaster management groups are established to support local government disaster management activities. The local group is supported by the relevant district group if and when disaster management activates exceed the capacity of the local group. The functions of this local group include (but are not limited to): <ul style="list-style-type: none"> <li>• Develop, regularly review and assess effective disaster management;</li> <li>• Assist local government for its area to prepare a local disaster management plan;</li> <li>• Ensuring the community is aware of ways of mitigating the adverse effects of an event, and preparing for, responding to and recovery from a disaster;</li> <li>• Identify, and coordinate the use of resources that may be used for disaster operations;</li> <li>• Manage disaster operations in the area under policies and procedures decided by the State Group; and,</li> <li>• Ensuring disaster management operations in the area are consistent with the State Group's SPF for disaster management for the State.</li> </ul>
Notice	A statement provided to the dam owner from the local government and/or the disaster management group on the outcomes of the assessment of the EAP.
Early Warning Notification System	Non-government, commercial subscription-based warning/alert system that provides SMS, landline, email, and social media alert messages.
Population at Risk (PAR)	The number of people calculated under the failure impact assessment guideline, whose safety will be at risk if the dam fails.
Probable Maximum Precipitation (PMP)	The theoretical greatest depth of precipitation for a given duration that is physically possible over a particular drainage basin.
Referable Dam	A dam will be referable dam if; <ul style="list-style-type: none"> <li>(a) A failure impact assessment of the dam is required to be carried out under the Act; and,</li> <li>(b) The assessment states the dam has a category 1 or category 2 failure impact rating; and,</li> <li>(c) The chief executive has, under section 349 of the <i>Water Supply (Safety and Reliability) Act 2008</i>, accepted the assessment.</li> </ul>



**Table 7  
Key Definitions (Cont'd)**

Concept	Definition
Stand Down	The final stage of emergency response when there is no longer a requirement to respond to the event and the threat is no longer present. At 'stand down' there is a transition from responding to an event back to normal core business and/or recovery operations.
Stand Up	The operational site following 'lean forward' whereby resources are mobilised, personnel are activated and operational activities commenced. Moving into this operational state triggers the requirement for an emergency event.
Sunny Day Failure	The failure of a dam without any other general flooding or spillway discharges.



Appendix A has been redacted



## Appendix B: Emergency Alert request process

Emergency Alert (EA) Request form/s should be completed and sent to the State Disaster Coordination Centre (SDCC) Watch Desk to activate the Emergency Alert Polygons.

### Instructions

1. Complete the relevant MS Word format EMERGENCY ALERT REQUEST form (see example below form) in consultation with LDMG and DDMG.
2. Telephone the SDCC Watch Desk on [REDACTED] and tell them your intention to use the EA for an Emergency Event for Perry River Dam
  - a) 1 KML polygons for this dam are stored in the Evolution Mining area of the DMP in the EA area in the relevant dam folder and save here locally: P:\Shared\Perry River Dam\01 Perry River Dam EAP. Ask the SDCC operative to locate the polygons. KML file called EAP Polygon (KML).
  - b) Give them your phone number, confirm their name, and end the call after advising the form/s will be sent shortly.
3. Send filled out EA form/s and polygons to SDCC watch desk email: [REDACTED]
4. Phone back SDCC to check that the message has been sent and ask for email confirmation.

The following text is a copy of that contained in the pre-filled EA request/s:

Alert (Advice Message)	<p>SMS</p> <p>This is a Dam Spillage Advice message from Evolution Mining. Perry River Dam is spilling excess water from 01:01am on 01 September 2025. Stay informed and monitor conditions. Warn neighbours, secure belongings and finalise evacuation plans. Listen to ABC Wide Bay radio 100.1 FM or 855 AM. More information available at <a href="https://emergency.northburnett.qld.gov.au/">https://emergency.northburnett.qld.gov.au/</a> or call 1300 696 272.</p>
	<p>Voice</p> <p>This is a Dam Spillage Advice message from Evolution Mining. Perry River Dam is spilling excess water from 01 01 A M on 01 September 2025. Stay informed and monitor conditions. Warn neighbours, secure belongings and finalise evacuation plans. Listen to ABC Wide Bay radio 100 point 1 FM or 855 AM. More information available at <a href="https://emergency.northburnett.qld.gov.au/">https://emergency.northburnett.qld.gov.au/</a> or call 1300 696 272.</p>
Lean Forward (Watch and Act)	<p>SMS</p> <p>This is a Dam Damage Watch and Act message from Evolution Mining. There is heavy rain causing moderate flooding along the Perry River from 01:01am on 01 September 2025. Perry River Dam may fail. Warn neighbours. Avoid flooded areas and prepare to move to higher ground. Prepare to leave now. Listen to ABC Wide Bay radio 100.1 FM or 855 AM. More information available at <a href="https://emergency.northburnett.qld.gov.au/">https://emergency.northburnett.qld.gov.au/</a> or call 1300</p>

# Perry River Dam Emergency Action Plan



**Evolution**  
MINING

Mt Rawdon

	<p>696 272. For life threatening emergencies call 000.</p> <p>Voice</p> <p>This is a Dam Damage Watch and Act message from Evolution Mining. There is heavy rain causing moderate flooding along the Perry River from 01 01 AM on 01 September 2025. Perry River Dam may fail. Warn neighbours. Avoid flooded areas and prepare to move to higher ground. Prepare to leave now. Listen to ABC Wide Bay radio 100 point 1 FM or 855 AM. More information available at <a href="https://emergency.northburnett.qld.gov.au/">https://emergency.northburnett.qld.gov.au/</a> or call 1 300 696 272. For life threatening emergencies call triple zero.</p>
<p>Stand Up (Emergency)</p>	<p>SMS</p> <p>Emergency Emergency. This is a Dam Failure Emergency Warning from Evolution Mining. Perry River Dam is likely to fail OR has failed at approximately 01:01am on 01 September 2025.</p> <p>Flooding may be faster and higher than previous floods. Leave immediately if it is safe to do so. If it is too dangerous to leave, move to higher ground and take shelter now. Listen to ABC Wide Bay radio 100.1 FM or 855 AM. More information available at <a href="https://emergency.northburnett.qld.gov.au/">https://emergency.northburnett.qld.gov.au/</a> or call 1300 696 272. For life threatening emergencies call 000.</p>
	<p>Voice</p> <p>Emergency Emergency. This is a Dam Failure Emergency Warning from Evolution Mining. Perry River Dam is likely to fail OR has failed at approximately 01:01am on 01 September 2025.</p> <p>Flooding may be faster and higher than previous floods. Leave immediately if it is safe to do so. If it is too dangerous to leave, move to higher ground and take shelter now. Listen to ABC Wide Bay radio 100 point 1 FM or 855 AM. More information available at: <a href="https://emergency.northburnett.qld.gov.au/">https://emergency.northburnett.qld.gov.au/</a> or call 1300 696 272. For life threatening emergencies call triple zero.</p>

# Perry River Dam Emergency Action Plan



**Evolution**  
MINING

Mt Rawdon

	<b>EMERGENCY ALERT REQUEST</b>	
	Location: Perry River Dam	Date: / /
Incident Controller / Requesting Officer:		Time: : hrs
Agency/Position:		Telephone:
		Email:

Event Type	<input type="checkbox"/> Cyclone	<input type="checkbox"/> Storm Surge	<input type="checkbox"/> Flash Flood	<input type="checkbox"/> Flood
	<input type="checkbox"/> Bushfire	<input type="checkbox"/> Fire Incident	<input type="checkbox"/> Smoke or Toxic Plume	<input type="checkbox"/> Chemical Spill
	<input type="checkbox"/> Tsunami (NOTE Tsunami EA campaigns will be sent as Location Based Text Message ONLY)			
	<input type="checkbox"/> Other (please specify):			
Message Severity	<input type="checkbox"/> Emergency Warning (NOTE activates the SEWS)		<input type="checkbox"/> Watch & Act	<input type="checkbox"/> Advice
Campaign Mode	<input type="checkbox"/> Voice	<input type="checkbox"/> SMS – Location Based	<input type="checkbox"/> SMS – Service Address Based	
LDMG Advised:	<input type="checkbox"/> YES	<input type="checkbox"/> NO	DDMG Advised:	<input type="checkbox"/> YES <input type="checkbox"/> NO

Threat Direction Required? <small>(NOTE: Can only be used for Emergency Warnings.)</small>	<input type="checkbox"/> YES <input type="checkbox"/> NO	Threat location indicated on map?	<input type="checkbox"/> YES <input type="checkbox"/> NO
-----------------------------------------------------------------------------------------------	----------------------------------------------------------	-----------------------------------	----------------------------------------------------------

<b>STEP 1. EA Polygon Area:</b> <input type="checkbox"/> Map attached	<b>STEP 2. Filename:</b>
<b>STEP 3. Spatial format:</b> (Indicate the format used) <input type="checkbox"/> KML *.kml (preferred format as per Spatial guidelines) <input type="checkbox"/> KMZ *.kmz <input type="checkbox"/> GML *.gml, <input type="checkbox"/> GeoJSON *.json	<b>STEP 4. Messaging/spatial data, supplied via:</b> <input type="checkbox"/> DMportal - Specify #names <input type="checkbox"/> Verbal <input type="checkbox"/> Email (send emails to SDCC@qfes.qld.gov.au) <input type="checkbox"/> Other (please specify)

Type (please use capitals for clarity) or **handwrite Voice** message (maximum 4000 characters **Ideally message should be less than 450 characters**).

---

Type or **handwrite SMS** below (maximum of 612 characters including spaces)

---

SEND TO [redacted] and call [redacted] TO CONFIRM

<b>FOR USE BY SDCC</b>	
Requesting Officer: Date: / /	Signature <input type="checkbox"/> Manual Transmission <input type="checkbox"/> EMS Transmission
EA User Name: Date: / /	Signature EA Campaign No.
Authorising Officer Name: Date: / /	Signature EMS Report ID:
<b>EA Manual and the Emergency Alert Request Form Template are available at: <a href="http://www.disaster.qld.gov.au">www.disaster.qld.gov.au</a></b>	

# Perry River Dam Emergency Action Plan



Mt Rawdon



**FIGURE B-1: Emergency Alert Polygon**